

EUROPLAT

European Psychology Learning and Teaching



**Erasmus Academic Network
Project Action Plan
November 2009**



This project has been funded with support
from the European Commission.

This publication reflects the views only of the
author, and the Commission cannot be held
responsible for any use which may be made
of the information contained therein.

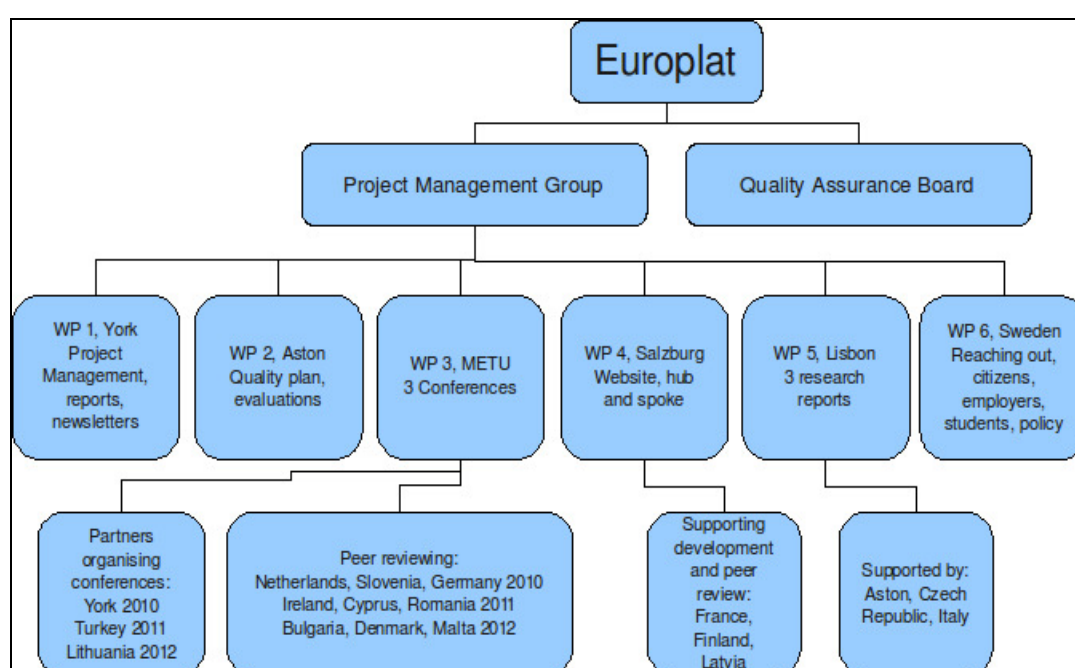
1. Introduction	4
2. Work packages	5
2.1. Work package 1 – Project Management	5
2.1.1. Activities	5
2.1.2. Outputs	5
2.1.3. Responsible Project Partners	5
2.2. Work package 2 – Quality Assurance	6
2.2.1. Activities	6
2.2.2. Outputs	6
2.2.3. Responsible Project Partners	6
2.3. Work package 3 – Valorisation and dissemination	6
2.3.1. Activities	6
2.3.2. Year 1 Europlat Conference, 30 June – 2 July 2010	7
2.3.3. Year 2 Europlat Conference, June 2011	7
2.3.4. Year 3 Europlat Conference, June 2012	7
2.4. Work package 4 – Development of regional hub and spoke	7
2.4.1. Activities	7
2.4.2. Outputs	8
2.4.3. Responsible Project Partners	8
2.5. Work package 5 – Development of Analysis and Research	8
2.5.1. Activities	8
2.5.2. Outputs	9
2.5.3. Responsible Project Partners	9
2.6. Work package 6 – Exploitation of Europlat	9
2.6.1. Activities	9
2.6.2. Outputs	10
2.6.3. Responsible Project Partners	10
3. Timeline of Activities	11
4. Project Partner Directory	12

1. Introduction

This action plan provides a reference tool for the project management team and the Europlat Network to use in developing the project. The structure outlines the six work packages and confirms which partners are involved in each and the expected outcomes.

With the decentralised structure of the project it is ultimately expected that each group of partners will take command of their work packages and deliver within the timeframe.

The following schema gives a simplified overview, which all partners can use as a reference tool.



2. Work packages

2.1. Work package 1 – Project Management

2.1.1. Activities

The University of York will manage the project and co-ordinate with other partners to deliver each of the outcomes of the project. The six core partners, who are members of the project management team, will all lead one of the work packages with a team of partners from the Europlat network to deliver the corresponding activities and outputs.

The University will lead the project management, financial management and prepare contractual reports and documentation.

2.1.2. Outputs

Project start up and action plan	November 2009
Electronic newsletters	December 2009 April 2010 August 2010 December 2010 April 2011 August 2011 December 2011 April 2012 August 2012
6 monthly project management report	June 2010 December 2010 June 2011 December 2011 June 2012
Report into the state of innovation in psychology	November 2010 November 2011 September 2012
Interim report to the Commission	TBC: August 2011
Project management closure report / final report to the Commission	October 2012

2.1.3. Responsible Project Partners

- University of York, UK

Supported by:

- University of Aston, UK
- Middle East Technical University, Turkey
- University of Salzburg, Austria
- University of Lisbon, Portugal

- Linnaeus University (formerly Växjö University¹), Sweden

2.2. Work package 2 – Quality Assurance

2.2.1. Activities

Quality Assurance is a vital part of the project to ensure that the Europlat network is fulfilling its objectives and is a compulsory work package stipulated by the Commission.

Senior members of the six core partners will be invited to form a quality assurance board. This separate board will develop the quality plan for the project and monitor its implementation. The plan will provide the written quality criteria, which will be measurable and relevant to the project to observe that the results are accurate, valid and complete.

The board will meet every six months during the life cycle of the project either at the EUROPLAT annual conference or to time with the project management meetings in Austria, Sweden and Portugal.

The board will employ an independent project evaluator to evaluate the project against its contracted tasks three times, at the end of each year in the project life cycle. The evaluator will present the report to the quality board who will act on it as appropriate.

2.2.2. Outputs

Writing a quality plan to monitor measurable, deliverable activities for the duration of Europlat	November 2009
Formulating a Quality Advisory Board made up of six senior members of staff from the project management partners to monitor the progress of the project	2009
Sourcing and contracting independent evaluators to monitor the project once per year	October 2010 October 2011 September 2012
Coordinating the quality assurance board to meet annually to monitor and advise on project activities.	May-June 2010 May-June 2011 May-June 2012

2.2.3. Responsible Project Partners

- University of Aston, UK

2.3. Work package 3 – Valorisation and dissemination

2.3.1. Activities

The main valorisation and dissemination activities undertaken in workpackage 3 will be three annual conferences timed, in two instances, to coincide and

¹ Växjö University until a merger with the University of Kalmar in January 2010

take place at the same venue as the PLAT conference and European Congress of Psychology.

At each venue, other workpackage activity meetings will also take place including project management meetings, research meetings and QA. Each conference is planned to take 1.5 days with an additional 1.5 days for those partners also attending group meetings:

- Project management group
- QA board
- Regional hub meeting
- Research working group meeting

Two candidates are invited to the Conference from each partner, with the associate partners able to contribute by sending additional guests.

The core partner from Turkey, METU, will lead this workpackage and deliver a conference in Turkey. They will work closely with a network of partners including the Lithuanian partner and York, who will each manage and deliver a conference. There will be three additional partners for each conference providing the pre conference critique of the agenda, papers and reports tabled for discussion.

2.3.2. Year 1 Europlat Conference, 30 June – 2 July 2010

Conference project management: METU, Turkey

Conference delivery: York, UK

Conference reviewers: The Netherlands, Slovenia, Germany

2.3.3. Year 2 Europlat Conference, June 2011

Conference project management: METU, Turkey

Conference delivery: METU, Turkey

Conference reviewers: Ireland, Cyprus, Romania

2.3.4. Year 3 Europlat Conference, June 2012

Conference project management: METU, Turkey

Conference delivery: Lithuania

Conference reviewers: Bulgaria, Denmark, Malta

All other partners will be involved attending the conferences.

2.4. Work package 4 – Development of regional hub and spoke

2.4.1. Activities

The regional hub and spoke will be the main communication tool and product developed by the network. The University of Salzburg will co-ordinate the design and development of the central project website. This will act as the hub feeding to all of the partners' own web pages which will serve as national spokes.

It is planned to get the site online early in the project as a basic shell after the first 3-4 months and build it during the project. Each partner will be responsible for maintaining their own pages and the spoke will be continually developed with a view to including the following information:

- contact details and description of the partner
- partner role in the EUROPLAT network
- the use, delivery and role of psychology in their country
- advice for students and potential students, including course options and career guidance
- advice for professionals, business and industry
- advice for the health and education sectors about the use of psychology
- links to further reference material and national psychological bodies

The partners will also be able to use the hub and spoke as a network communication tool, along with a partners' email user group. The hub and spoke will provide project updates, reports and materials as they are completed to ensure that the project products are available to all stakeholders. As the hub will be an online data source it will be available for the public, interested members of business and industry and policy makers outside the project to use as a resource for psychology provision and development in their own countries and across Europe.

2.4.2. Outputs

Project website, hub and spoke launched	February 2010
Project website, hub and spoke partner links established	June 2010
Ongoing updating and developing	June 2010 onwards

2.4.3. Responsible Project Partners

- University of Salzburg, Austria

Supported by three partners:

- Paris Descartes University, France
- University of Helsinki, Finland
- Riga Teacher Training and Education Management Academy, Latvia

All other partners will be involved providing national information for the website.

2.5. Work package 5 – Development of Analysis and Research

2.5.1. Activities

Three analysis and research projects will be undertaken looking at issues pertinent to the development of psychology in Europe and the wider world.

One project will be completed each year and presented at the EUROPLAT annual conference. There will be a team of four partners led by the University of Lisbon who will undertake these research projects and support and peer review the partner's projects. Each project is expected to use the network as a source for primary and secondary research.

The first year project will be led by Aston, and in light of the need within European psychology for greater knowledge sharing and consistency of teaching, will be titled: Research and analysis report into innovative teaching methods within psychology education.

The second year project will be led by Masaryk University from the Czech Republic and will be a report into the employability of European graduates with a post Bologna Bachelor or Masters Degree in psychology.

The third year report will be led by the University of Padova, Italy and will be designed to develop the high quality psychology provision required in Europe to meet the Lisbon goals and will be an analysis and research report into quality assurance initiatives to maintain standards.

Each year, interim findings will be presented at the annual conference and published on the EUROPLAT web hub. The results will also contribute to the three annual reports focusing on the state of practice and innovation in psychology education.

2.5.2. Outputs

Innovative teaching methods within psychology education, Aston	Summer 2010
Employability of European graduates with a post Bologna Bachelor or Masters Degree in psychology, Masaryk University	Summer 2011
Quality assurance initiatives to maintain standards, University of Padova	Summer 2012

2.5.3. Responsible Project Partners

- University of Lisbon, Portugal

Supported by three partners:

- University of Aston, UK
- University of Masaryk, Czech Republic
- University of Padova, Italy

All other partners will be involved in the data collection.

2.6. Work package 6 – Exploitation of Europlat

2.6.1. Activities

EUROPLAT wishes to create a sustainable network that will grow beyond the life cycle of the project and will have results that go further than the academic

sphere of psychology. Through appropriate exploitation of the research reports, newsletters and conference activities EUROPLAT will be able to reach a wider range of citizens, members of the business community, future students who may not have decided upon psychology as a study and career option and the policy makers in Europe.

The partners will use various communication methods to reach these groups, led by our Swedish partner, Linnaeus University, which will manage and coordinate this work package. The exploitation of the different EUROPLAT products will target the partners, wider stakeholders, citizens, employers and ERASMUS actors at different levels:

- general information will be exploited through our publicity of EUROPLAT including flyers, web pages and publications
- understanding of issues within psychology through workshops, seminars and the conferences
- implementation and direction of external policy makers through sustainability, embedding quality changes, building courses with institutions, departments and ERASMUS

These materials will be coordinated and largely developed by Linnaeus University; however, each institution will be responsible for appropriate dissemination in their own countries.

The sharing of best practices and increasing quality in psychology teaching and education will lead to the development of better courses which each institution can exploit through their own portion of the EUROPLAT web portal, their institutions and departmental websites and marketing materials, such as course brochures and advertising.

By inviting business groups and key individuals from the business communities to attend the conferences we will be able to exploit EUROPLAT to professional stakeholders leading to greater understanding of psychology graduate attributes and skills to employers.

2.6.2. Outputs

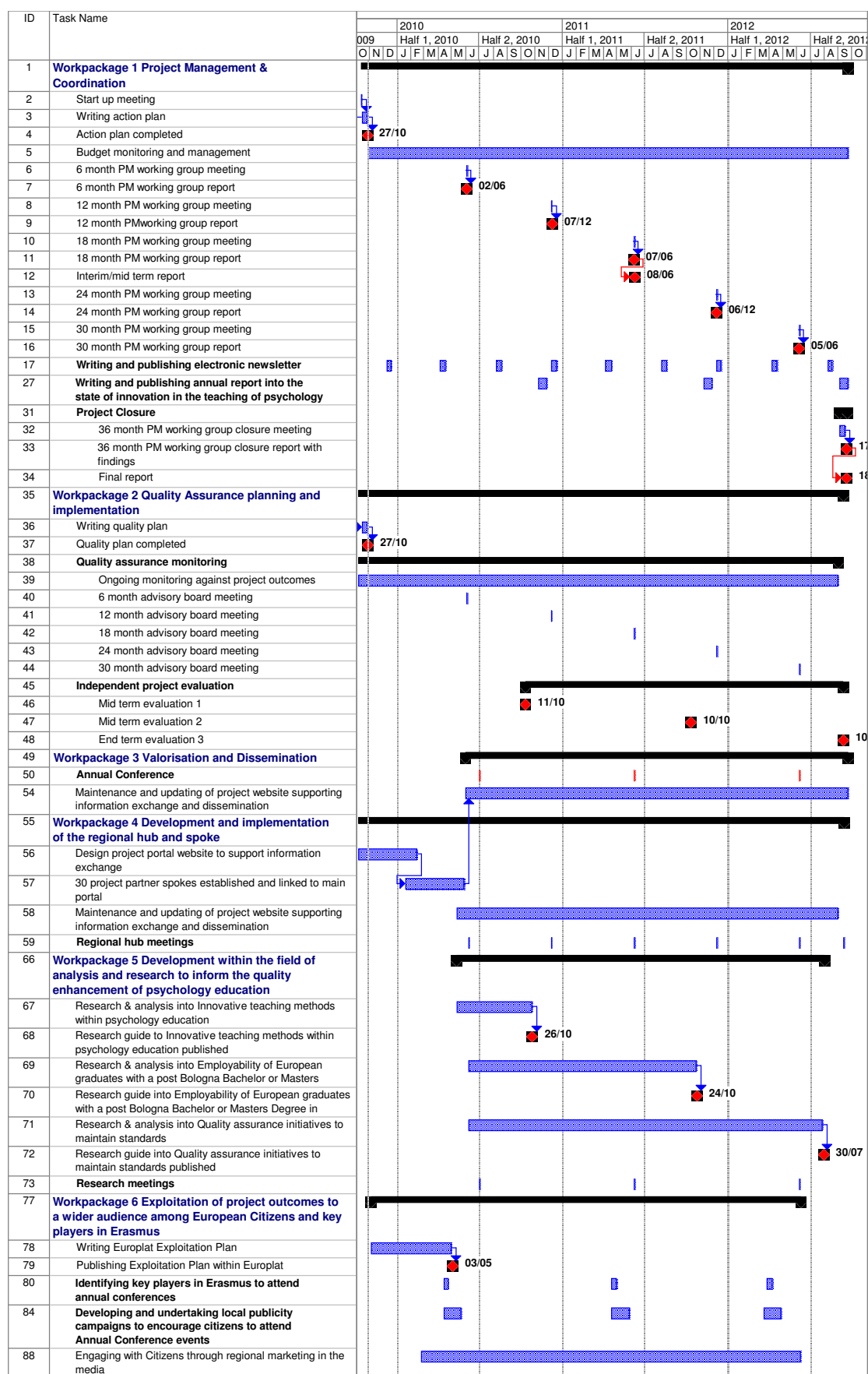
Valorisation and dissemination plan	April 2010
Dissemination events, local publicity and citizenship engagement	April 2010 ongoing

2.6.3. Responsible Project Partners

- Linnaeus University, Sweden

All other partners will be involved in the valorisation and dissemination events.

3. Timeline of Activities



4. Project Partner Directory

	Name	Country	Address	Contact Person	Telephone	Email
1	The University of York, Higher Education Academy Psychology Network	United Kingdom	Department of Psychology University of York First Floor, Information Centre Market Square York YO10 5NH UK	Annie Trapp	+44 (0)1904 433156	a.trapp@psych.york.ac.uk
2	Aston University	United Kingdom	Aston University, Aston Triangle, Birmingham B4 7ET	Mr Peter Reddy	0121 204 4076	p.a.reddy@aston.ac.uk or p.a.reddy.ac.uk
3	Middle East Technical University	Turkey	Inonu Bulvarı, Ankara6531	Prof. Dr Nebi Sumer	+90 312 2105111	nsumer@metu.edu.tr
4	University of Salzburg	Austria	4 Kapitelgasse, Salzburg A- 5020	Dr Jörg Zumbach	+436628044580 1	Joerg.zumbach@sbg.ac.at
5	University of Lisbon	Portugal	Alameda da Universidade, Lisboa1649-004	Prof. José Frederico Marques	+351217943600	jfredmarq@fpce.ul.pt or ulfpfred@fpce.ul.pt
6	Linnaeus University	Sweden	1 Universitetsplatsen, Växjö SE- 351 95	Professor Abdul Kadir Mohammed	+46 470 708150	Abdul.mohammed@vxu.se
7	Vilnius University	Lithuania	3 Universiteto Str, Vilnius1513	Prof Danutė Gailienė	+37052667605	danute.gailiene@fsf.vu.lt
8	Masaryk University	Czech Republic	10 Jostova, Brno602 00	Mgr Ales Neusar	+420 549494503	ne.ales@centrum.cz
9	University of Padova	Italy	8 Via Venezia, Padova35131	Prof Pietro Boscolo	+049 8276568	pietro.boscolo@unipd.it
10	Sofia University	Bulgaria	52, Ap 2, Cherkovna Street, Sofia1505	Prof Sava Djonev	+359 02 931 84 03	org_con@yahoo.com
11	The University of Copenhagen	Denmark	Øster Farimagsgade 5A, Copenhagen DK-1353	Dr Ingrid Leth	45 (0)3532 8700	Helle.andesen@psy.ku.dk
12	University of Malta	Malta	MSD, Tal-Qroqq 2080	Dr Tanti-Burlo	356 21 333903	elena.tanti-burlo@um.edu.mt
13	University of Applied Sciences	The Netherlands	4 Edisonweg, Vlissingen 4382 NW	Dr Hans Reynierse	+31(0)11862076 8	hans.reynierse@hz.nl
14	University of Ljubljana	Slovenia	12 Kongresnitrg, Ljubljana SI 1000	Dr Matija Svetina	+386 1 241 1156	m.svetina@ff.uni-lj.si
15	University of Heidelberg	Germany	Hauptstrasse, Heidelberg D-69117	Professor Birgit Spinath	+496221 547355	martin.hautzinger@uni-tuebingen.de
16	Dublin City University	Ireland	Glasnevin, Dublin D9	Dr Finian Buckley	+353 017005566	birgit.spinath@uni-hd.de or birgit.spinath@psychologie.uni-heidelberg.de
17	University of Cyprus	Cyprus	75 Kallipoleos Avenue, Nicosia 1678	Dr Stelios Georgiou	+357 22 89 2076	stege@ucy.ac.uk
18	University of Bucharest	Romania	B-dul Iuliu Maniu, nr. 1-3, Corp A, Et. 5,	Dr Romeo Zeno Cretu	+40 3151852	stege@ucy.ac.cy

			Bucharest 61102			
19	Paris Descartes University	France	12 rue de l'Ecole de Medecine, Paris 75006	Dr Maria Pereira-Fradin	+33 1 55 20 59 54	zenocretu@yaho o.com
20	University of Helsinki	Finland	PO BOX 9, University of Helsinki, Helsinki FIN-00014	Dr Laura Hokkanen	+358 09 191 29515	Maria.pereira@p arisdescartes.fr or maria.pereira@u niv-paris5.fr
21	Riga Teacher Training and Education Management Academy	Latvia	(7-1) Imantas 7. linija, nr.1, Riga1083	Dr Guna Svence	+3717860670	laura.hokkanen @helsinki.fi
22	Free University of Brussels	Belgium	50 Avenue F.D. Roosevelt, Brussels B-1050	Prof Alain Content	+322 650 4227	gunasvence@rpi va.lv
23	University of Tartu	Estonia	78 Tiigi, Tartu 50410	Professor Juri Allik	+3727375905	alain.content@ul b.ac.be
24	University Of Athens	Greece	School of Philosophy, University Campus, Athens 15784	Dr Spyridon Tantaros	+30210 727751	jjri@psych.ut.ee or juri.allik@ut.ee
25	Universidad Complutense de Madrid	Spain	2 Avenida de Séneca, Madrid 28040	Dr María del Pilar Sánchez López	+34 91 394 3200	mpanche@psi. ucm.es
26	University of Luxembourg	Luxembourg	Campus Walferdange, Route de Diekirch, Luxembourg L-7201	Professor Georges Steffgen	+352 4666 44 - 9000	vdresch@psi.uc m.es or mpanche@psi. ucm.es
27	Semmelweis University	Hungary	Nagyvarad Ter, Budapest 1089	Laszlo Leder	36208258406	laszloleder@gm ail.com
28	Adam Mickiewicz University	Poland	89 Szamarzewskieg o, Pozan 60-568	Dr Emilia Soroko	+48 61 8292 307	laszlo.Leder@is g.eu
29	University of Trnava	Slovakia	23 Hornopotočná, Trnava 918 43	PhD Peter Halama	+42133 5939 361	emilia.soroko@a mu.edu.pl
30	University of Iceland	Iceland	Sæmundargata, Reykjavik IS 101	Dr Jorgen Pind	3545254086	peter.halama@s avba.sk
31	University of Lichenstein	Liechtenstein	Prince Franz- Josef-Strasse, Vaduz 9490	Ingo Bildstein	4232651111	Ingo.bildstein@h ochschule.li
32	University of Tromsø	Norway	University of Tromsø, Tromsø NO-9037	Lillian Verderhus	+47 77 64 40 00	Lillian.verderhus @psyk.uit.no